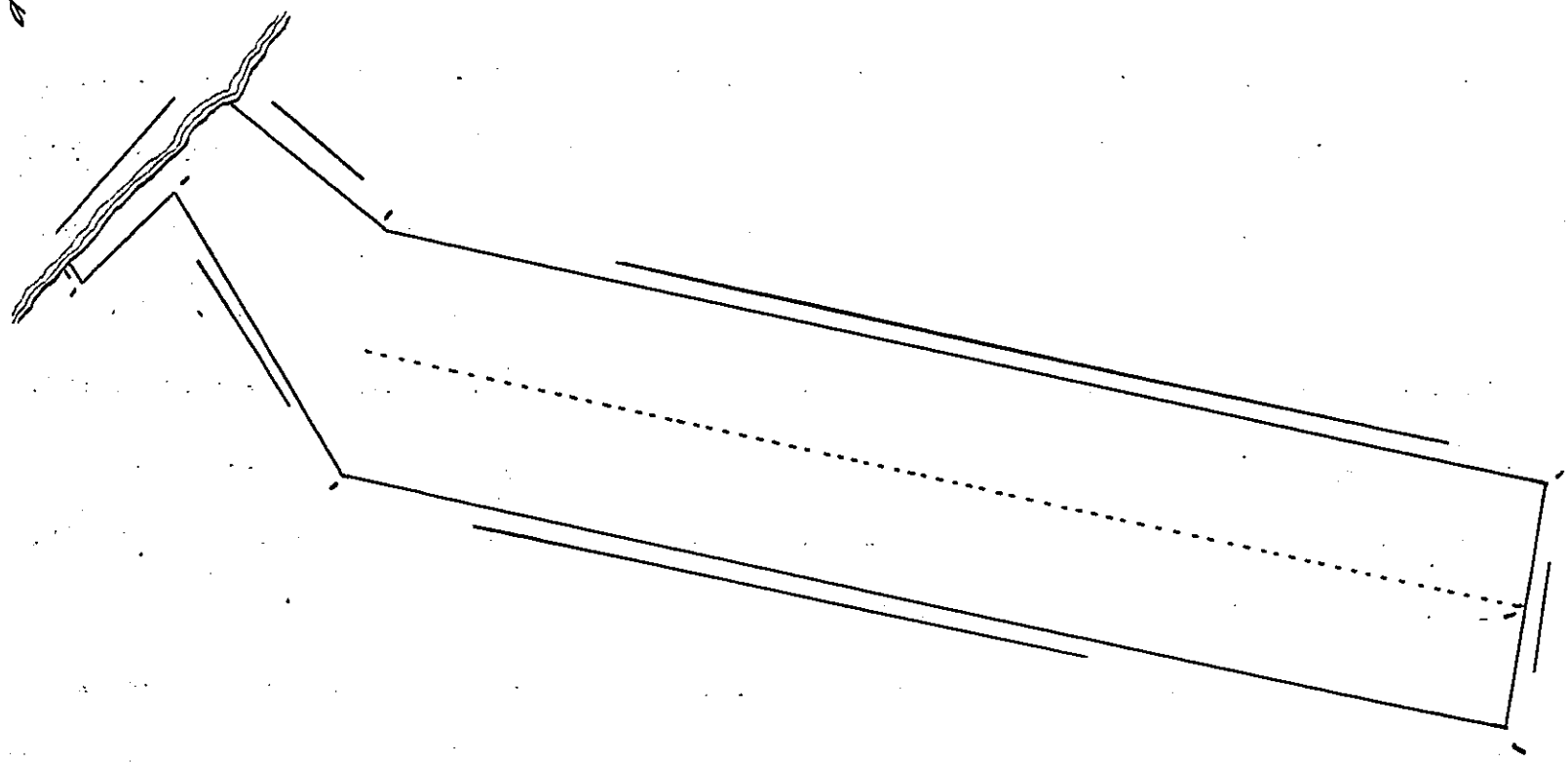


Thirty seven acres to Jn. White  
 Patent Dated 10<sup>th</sup> 12<sup>mo</sup> 1699<sup>o</sup>  
 Begins at a Corner post by  
 a Creek

N 58 E 5 1/2 per  
 N 48 W 18 } by the Ferry land  
 N 58 W 44 }  
 N by E 160 } by Saml Clifts land  
 W by N 33 }  
 S by W 160 } by Jos Englishs Land  
 S 38 W 27 } to the said Creek  
 by the Creek to the Beginning



Bounds of Hannah Carpenter's  
 Lands at Bristol taken out of  
 Deeds

Begins at Tree by Mill Creek  
 N 49 E 5 South Mill Street  
 126 Middle J. Smiths front  
 to Creek  
 S 49 W  
 up the Creek  
 Begins in T Brooks land 1 1/2 per.  
 from the north side of Mill Street  
 Then  
 N 49 E 7 1/2 out stump  
 N by E 160 tree  
 E by S 8 1/2 stake  
 S by W 160  
 E by S 8 1/2  
 S 56 W 17 1/2 stake  
 W 40 N 10 Beginning  
 9 1/4 in both  
 John Smith to Town

John Smith to Th. Musgrave  
 Beginning at a stake by Jno  
 Towns Land South Side Mill  
 Street  
 34 feet by the street to stake  
 S 49 W - to a stake by the Creek  
 34 by the said Creek to a stake  
 N 64 E by J Town Beginning

Begins on the North of Mill  
 Street in the middle of Smiths  
 Land Thence  
 N 43 E 13 1/2  
 W 40 N 5  
 S 49 W - to a stake North  
 of Mill Street in Brooks line  
 4 3/4 by said Street Begin

Begins Corner Jno Towns land  
 N by E 160 by Towns land  
 E by S 4 1/4 stake  
 S by W 160 by John Smith  
 W by N 4 1/4 Begin  
 4 1/2 acres

No Seventy four  
 Wm Brigdale  
 179